

// 2S

Flexible double-wall hoses, 2S type, for combustion fumes exhaust systems

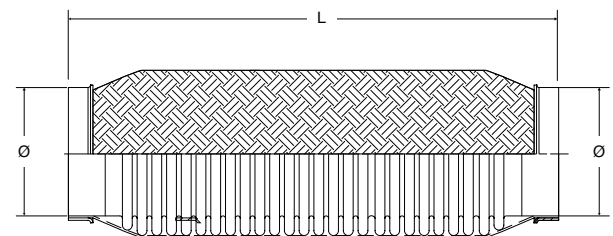
Use: compensate vibration on engine axle/ exhaust hose.

Characteristics: they are made of a double-layer corrugated stainless steel bellows with parallel waves to ensure that the combustion gases do not leak and an external braid to protect the hose from mechanical shocks and possible stretchings during use.

Temperature: 400 - 600 °C.

Applications: in specific high temperature scenarios, traction and compression movements, being they lateral or angled.

Other sizes can be evaluated and manufactured upon customers' request.



Item Code	Ø fitting size	L (length)
	mm	mm
2S0455100	45,5	100
2S0455150	45,5	150
2S0455200	45,5	200
2S0455250	45,5	250
2S0505100	50,5	100
2S0505150	50,5	150
2S0505200	50,5	200
2S0505250	50,5	250
2S0555100	55,5	100
2S0555150	55,5	150
2S0555200	55,5	200
2S0555250	55,5	250
2S0605100	60,5	100
2S0605150	60,5	150
2S0605200	60,5	200
2S0605250	60,5	250